

Sipoo Beanie



This colorwork beanie is worked from the bottom up and features a cozy, triple-layered brim. The colorwork is inspired by the Sipoo tapestry.

It can be worked with double-pointed needles or a circular needle using the Magic Loop technique.

The pattern includes three sizes: Child, Adult 1, Adult 2, and each size has its own chart.

The pattern is beginner-friendly.

SIZES

Child (Adult 1) Adult 2

Finished beanie circumference 50 (55) 57,5 cm

Choose a size that is 1-4 cm smaller than your head circumference.

YARN

Vuonue, Pentti worsted (240 m/100 g)
(70% Finnish wool, 30% Tencel)

Estimated amount of yarn needed

Main color (light pink): 100 (100) 150 g

Contrasting color (white): 20 (20) 20 g

Or other DK weight yarn in preferred colors.

NEEDLES

3,5 mm circular needle with a 40 cm cable or double pointed needles

4 mm circular needle with a 40 cm cable or double pointed needles

Or other to meet the gauge.

GAUGE

24 sts x 31 rnds= 10 cm x 10 cm

(Stockinette in the round with 3,5 mm needles)

(Colorwork in the round with 4 mm needles)

Check the gauge by knitting a swatch in both stockinette and colorwork by following the chart.

NOTIONS

- Stitch markers
- A tapestry needle

ABBREVIATIONS

k - knit

p - purl

rnd(s) - round(s)

st(s) - stitch(es)

Decreases

ssk - slip, slip, knit; Slip 1 st knitwise, slip 1 st knitwise, place the sts back on the left needle, knit the sts through the back loop (1 st decrease).

k/p2tog - knit/purl 2 sts together (1 st decrease).

TIPS FOR COLORWORK

Color dominance

How you carry your yarns behind your work determines which color is more prominent in the pattern. When holding the yarns in one hand, hold the contrasting color closer to the work and always pick up the main color from above it. This way the contrasting color is the dominant color.

Floats

Floats are the strands of yarn from changing colors behind your work. You don't need to catch floats in this beanie since they will be hidden inside the brim. Make sure your floats have enough slack to prevent the fabric from bunching.

PATTERN

BRIM

With 3,5 mm needles, cast on with the backwards loop method 120 (132) 138 sts using the main color. Place a stitch marker in front of the first st to mark the beginning of the rnd.

On the first rnd, knit the sts through the back loop. Continue by working stockinette for 0,5 (1,5) 1,5 cm (= n. 2 (5) 5 rnds).

Switch to 4 mm needles and start working according to the corresponding chart. Charts can be found at the end of the pattern. The pattern repeat in the chart is 40 (44) 46 sts and it repeats 3 times during 1 rnd. Placing stitch markers between pattern repeats can help you with following the chart.

After the chart, switch to 3,5 mm needles and work 8 (10,5) 10,5 cm (= approx. 25 (33) 33 rnds) in stockinette with the main color.

Weave in the contrasting color ends to the wrong side of the work.

Now the cast on edge is worked together with the live sts to form a double folded brim:

The yarn forms horizontal loops in the cast on edge. Pick up the first loop with your left needle, p2tog, *pick up the next loop with your left needle and p2tog*. Repeat *-* until the end of the rnd.

Now the cast on edge is attached to the work, and the brim is done.

P 8 rnds.

Work stockinette for 2,5 (6) 6 cm (= n. 8 (19) 19 rnds) more.

CROWN DECREASES

Work 1 rnd and decrease 0 (4) 2 sts evenly. There are now 120 (128) 136 sts.

Now place stitch markers for the decreases:

K 30 (32) 34, place a stitch marker, k 30 (32) 34, place a stitch marker, k 30 (32) 34, place a stitch marker, k 30 (32) 34.

There are now 4 stitch markers and the decreases are made on both sides of each stitch marker.

Decreases are made as follows:

Rnd 1 (decrease rnd): k1, k2tog, k until 3 sts remain before the next stitch marker, ssk, k1, slip the stitch marker on to the right needle, k1, k2tog, k until 3 sts remain before the next stitch marker, ssk, k1, slip the stitch marker onto the right needle, k1, k2tog, k until 3 sts remain before the next stitch marker, ssk, k1, slip the stitch marker onto the right needle, k1, k2tog, k until 3 sts remain, ssk, k1.

A total of 8 sts have been decreased.

Rnd 2: K until the end of the rnd.

Rnd 3: K until the end of the rnd.

Rnd 4: Repeat the decrease rnd.

Repeat rnds 3-4 (=the decreases are made on every other rnd) until 16 (16) 16 sts remain.

If needed, switch your circular needle to DPNs or use the magic loop technique.

Break the yarn, pull it through the remaining sts, and tighten.

FINISHING

Weave in the ends on the wrong side of the work.

Submerge the beanie in cold water. Squeeze the excess water off and place the brim on top so that the colorwork shows and the purl stitches are hidden behind it. Let it dry completely before use.

CHARTS

Follow the chart according to your size from right to left, bottom up.

The charts show 1 pattern repeat.

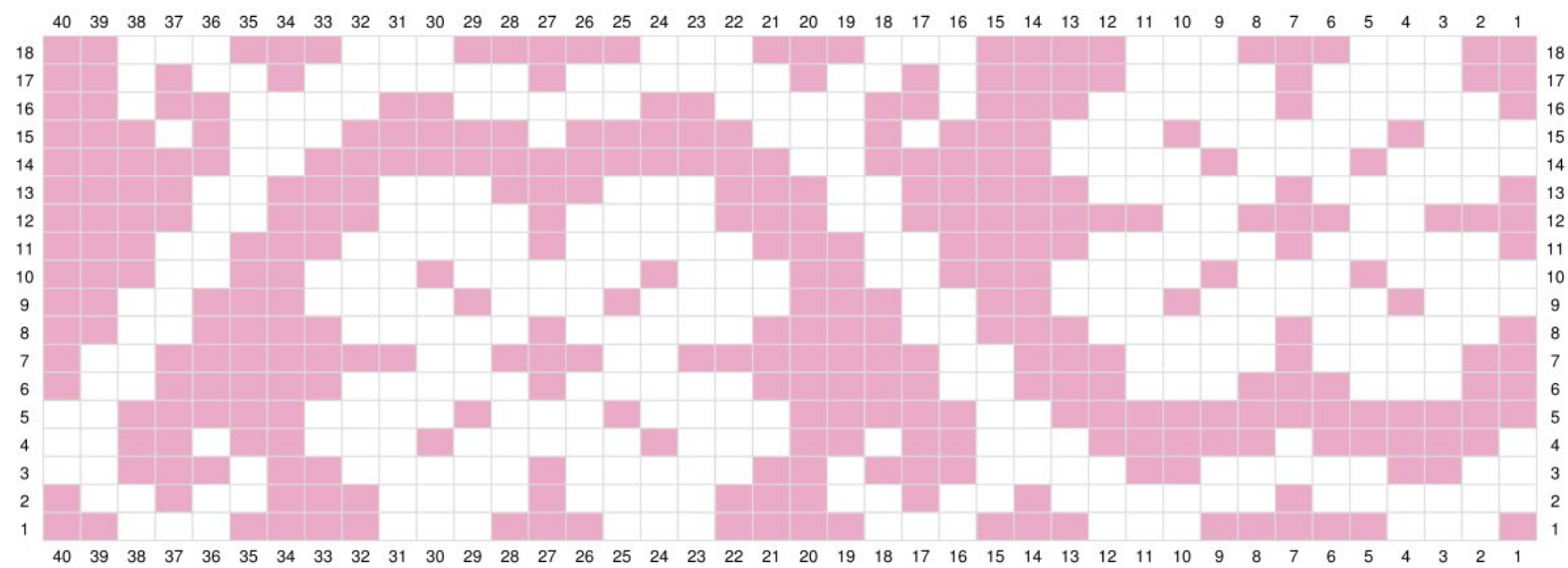


Main color

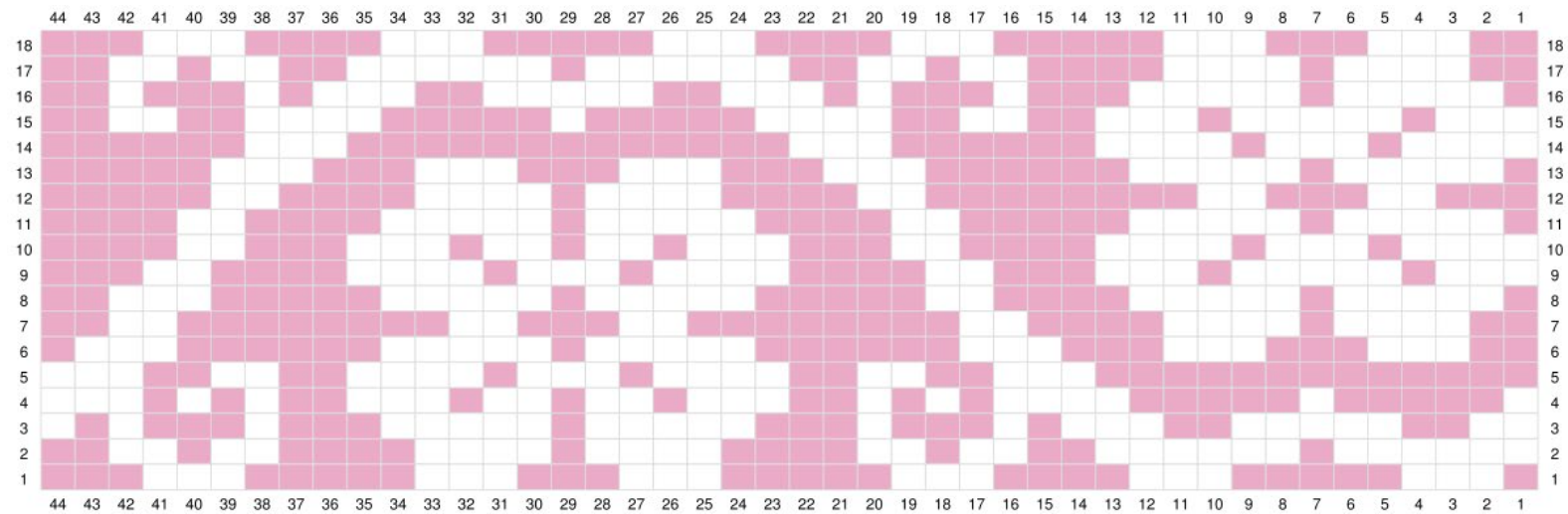


Contrast color

Child



Adult 1



Adult 2

